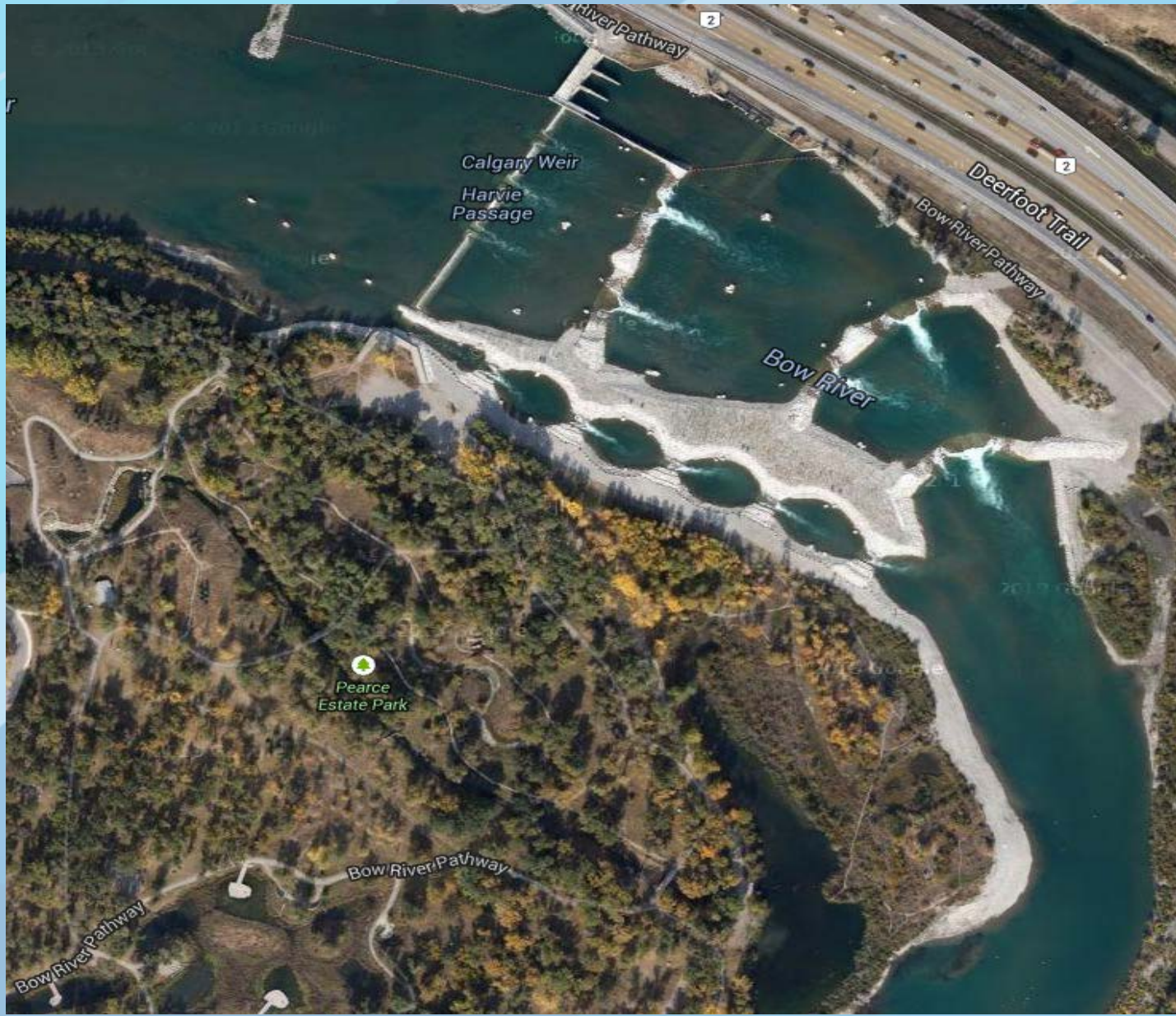




Alberta

Completed Harvie Passage



Alberta

June 22, 2013



Harvie Passage - Post 2013 Flood





BUOY

SLUICeway

FLOW

HWC DROP #1
(WH WEIR)

BUOY

HWC DROP #2L

HWC POOL #1

HWC POOL #2

WESTERN HEADWORKS
CANAL

DEERFOOT TRAIL

GRAVEL BAR

LWC DROP #1

FLOW

HWC DROP #2R

REGIONAL PATHWAY

LWC DROP #2

LWC DROP #3

HWC POOL #3

HWC DROP #3L

HWC DROP #3R

DIVIDE ISLAND

EXPOSED TILE DRAIN PIPE

FISH HATCHERY —
DISCHARGE LINES

LWC DROP #4

HWC DROP #4

LWC DROP #5

PEARCE ESTATE PARK

ERODED CHANNEL

LWC DROP #6

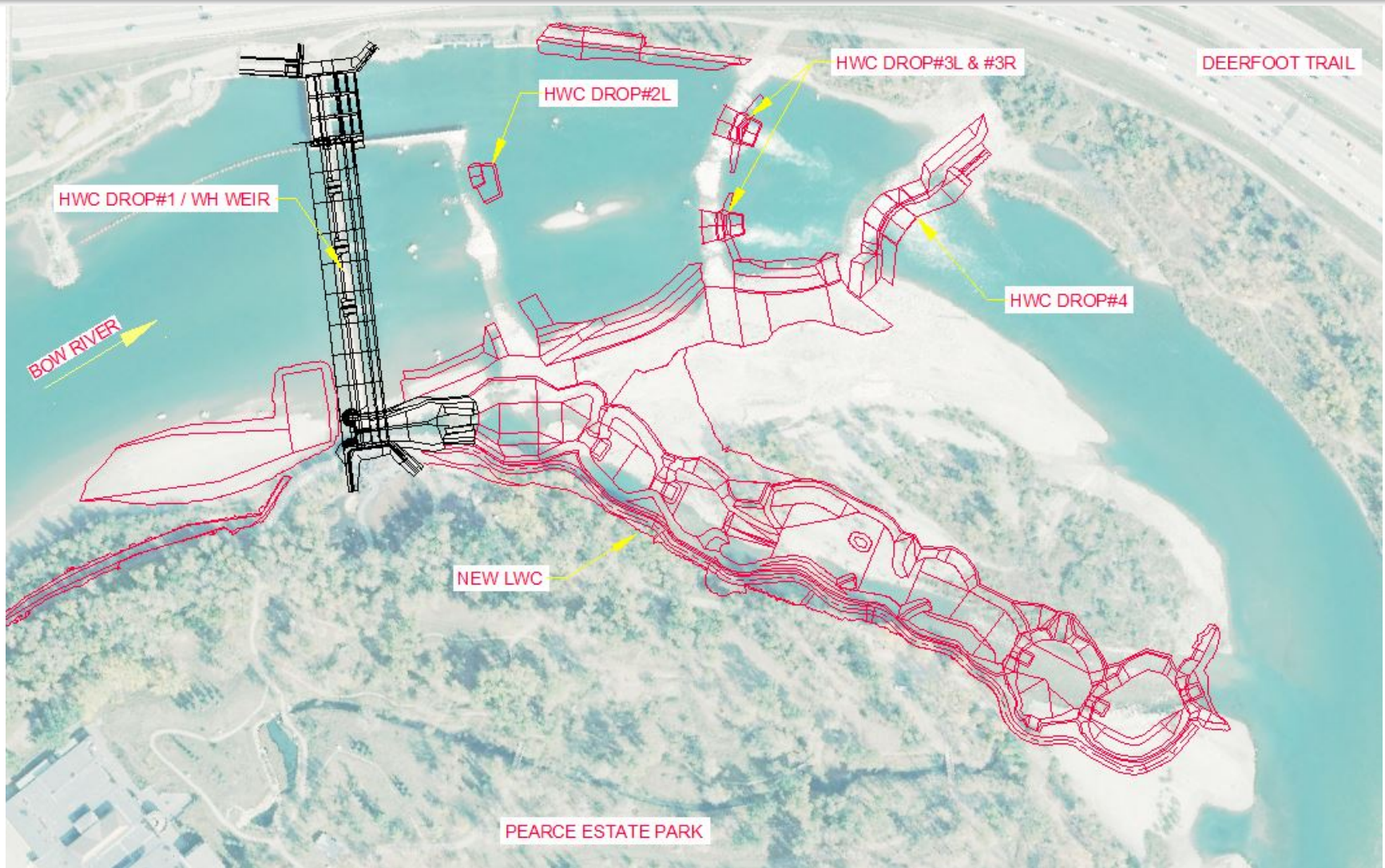
APPROX. OUTLINE OF
ISLAND

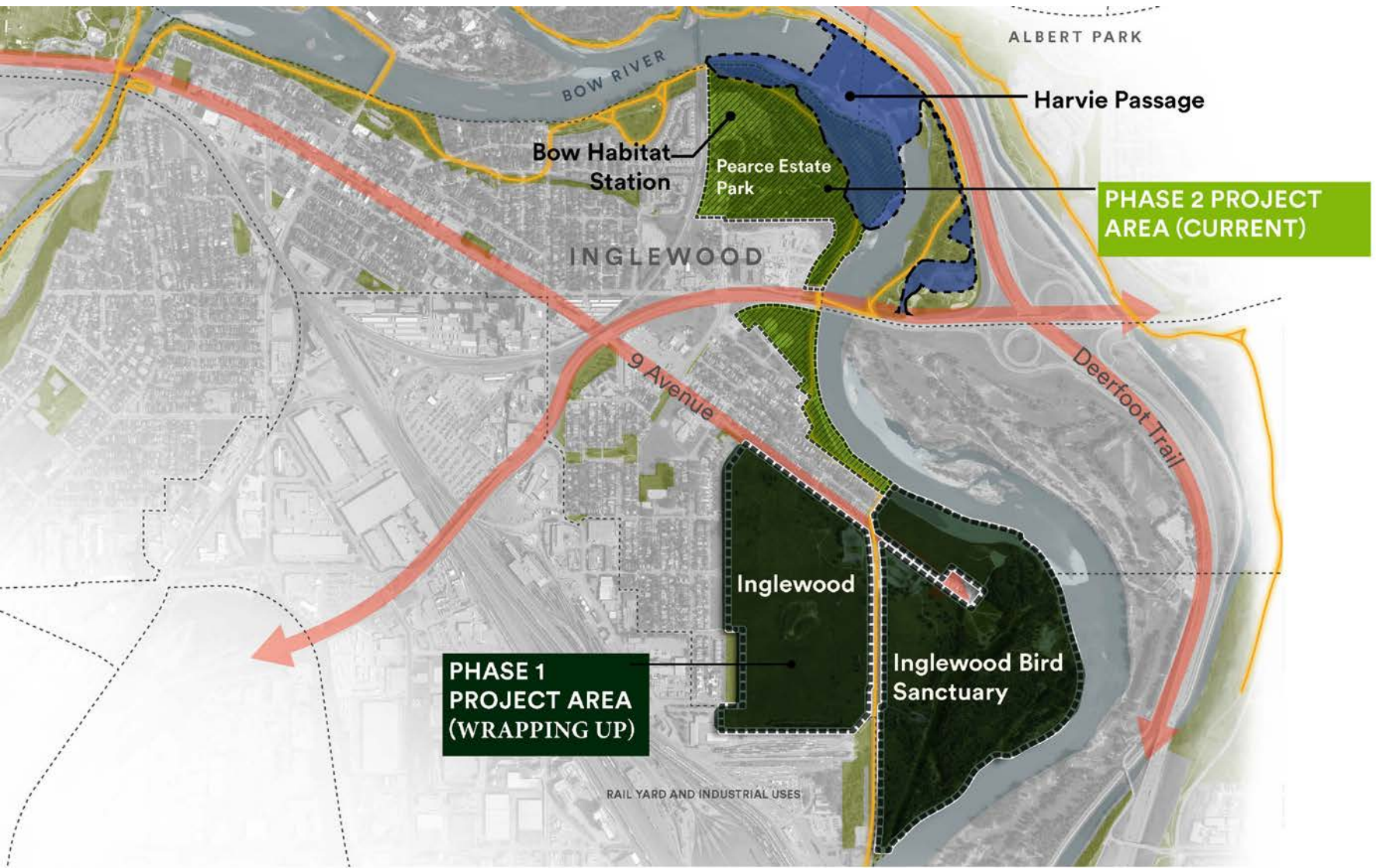
GRAVEL BAR

FLOW



2013 Flood Damage Repairs – Harvie Passage Final Design



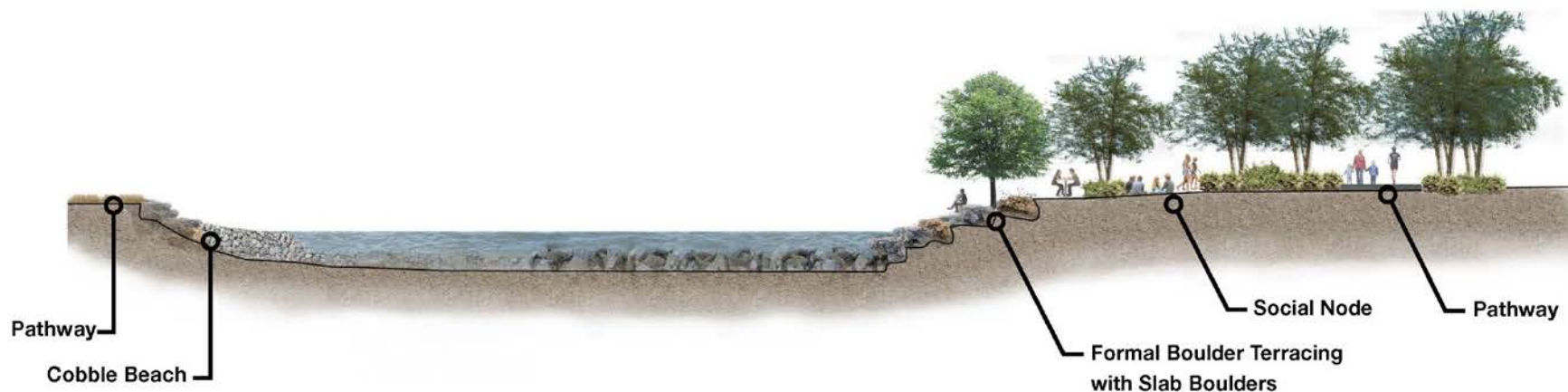


Bend in the Bow



Park Context





Rock Type



Project Schedule

- Tendering: May 26, 2016 to June 23, 2016
- Contractor start on Site: July 15, 2016 (earliest)
- Divert River through eroded channel: Prior to September 15, 2016
- HWC Drop #3L, #3R, and #4 Construction: September to November 2016
- Divert River through HWC: April 2017
- LWC Construction: May 2017 to September 2017
- Bio-Engineering and Plantings: September 2017 to April 2018
- Substantial Performance of the Work: April 30, 2018
- Total Performance of the Work: June 30, 2018