

Harvie Passage Whitewater Park



Figure 1 Passing through in a Canoe



Figure 3 Rafting the low water channel



Figure 2 Learning to paddle

The Harvie Passage Task Force is being formed with the purpose of creating a Facility Enhancement Plan. The Calgary River Users Alliance celebrates this step and offers the following recommendations and/or items to consider to make a vibrant and safe facility, that is being used to its potential.

Management

- The in-river structure is owned by Alberta Environment.
- Explore the options of management by City of Calgary Parks and Open Spaces, Recreation and Social Programs, or a third party non-profit.
- Will require an ongoing stakeholders management committee.

Operations

- Requires a clearly assigned City staff person. Recommend that there be one river-related person within the City.
- Specific maintenance budget.
- Education staffing – water safety and/or environmental education.
- Safety staffing – life guards (like community lakes) / boat patrol (akin to Glenmore boat patrol).
- Coordinated river education and enforcement across departments
- Event management



Capital Improvements

- Road access to the boat ramp and equipment drop-off, in line with the Calgary River Access Strategy (see appendix 1 map).
- Directional signage and boom reconsideration to allow for improved wayfinding and safe passage through the facility.
- Dedicated parking to help alleviate stresses on the Bow Habitat and Pearce Estates area.
- Simple public changeroom at the main parking lot.
- Short-term storage solution. SeaCan or similar, for maintenance & safety equipment and boat storage for organizations.
- Longer-term multi-organization boathouse facility - storage, changeroom, community hub.
 - Including - commercial food and equipment concession
 - Emergency services hub



Figure 4 Trailered Boat Ramp



Figure 5 Changeroom, Durango, CO



Concept drawings funded by The Parks Foundation

- Public Toilets (short-term & long-term solutions)
- Improved pathways and signage from parking lot
- Signage about events and programming
- PFD lending program



Figure 6 PFD Lending Program, BC

- Longer-term wave enhancements to improve function
 - Right channel modifications – easy and cost effective
 - Left channel modifications
 - Alberta Whitewater Association & Alberta River Surfing Association have modelling & engineering information available to support this.

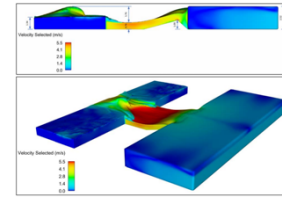


Figure 7 2021 Wave Modelling Report

- Digital strategy: Website, Social, Media
 - Facility
 - Safety
 - Events & Programming

- Neighbourhood cooperation
 - Bow Habitat/SoBow/Inglewood



Figure 8 Bridge at Kelly's Whitewater Park, Cascade, ID

- Lighting
- Bridge to the Island
- Festival site
- River-side concession
- Food truck hub
- Slalom course donor recognition & design refinements



Figure 9 Surfing Tatonka on river left

Figure 10 Stand-up Paddleboarding

Figure 11 The Pumphouse Whitewater
Park with Clubhouse, Ottawa

Appendix 1 – Access Concept Plan

